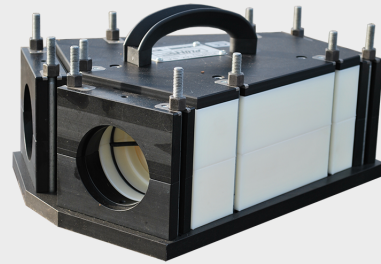
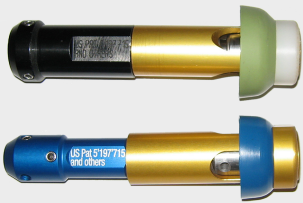




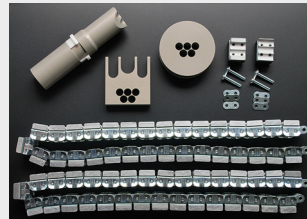
Figaro,
intermediate cable storage system, avoiding
figure of 8



Y-connector,
for the installation of cable into an occupied
duct



Sonic head,
for the installation of cables with low
stiffness



Multi-duct accessories,
for the installation of microduct bundles

PLUMETT

PUSH THE BOUNDARIES

SIMPLE SOLUTION FOR
SOLID CONSTRUCTION



PLUMETT SUPERJET™

WITH THE LARGEST OPERATIONAL RANGE, THE SUPERJET™ PROVIDES OUTSTANDING RESULTS TO THE MOST DEMANDING REQUIREMENTS.



www.plumettaz.com

Plumettaz SA | Route de la Gribannaz 7 | 1880 Bex - Switzerland

T +41 24 463 06 06 | info@plumett.com

MAIN ACCESSORIES

Standard equipment:

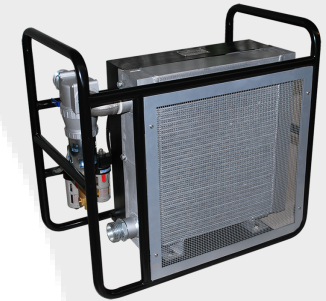
1 box for the SuperJet / 1 box for tools, inserts, wear parts and consumables (seals, lubricant, etc.) / 1 set of tools / 1 speed and distance indicator / 1 air hose 1½" (10 m) and stop valve to connect to compressor / 2 bottles of lubricant Jetting Lube / 1 operation and maintenance manual

Standard version	SuperJet with hydraulic drive	SuperJet with pneumatic drive
Type	H01	P01
Cable dia. [mm]	9-32	9-22
Duct OD [mm]	20-63	20-63
Drive unit	Hydraulic	Pneumatic
Max. air consumption of motor [m3/min]	-	1 (at 4 bar)
Pushing force [N]	0-700	0-600
Linear pressure on cable [N/cm]	0-94	0-94
Max. speed [m/min]	60	60
Hydraulic power pack, type of engine	Honda Gasoline GX200	-
Hydraulic power pack, engine, max. power [kW]	4.1	-
Hydraulic power pack, engine, max. speed rpm [min-1]	3600	-
Hydraulic power pack, pump, delivery rating [l/min]	17	-
Hydraulic power pack, pump, hydraulic pressure [bar]	70	-
Max. air pressure [bar]	12	12
Max. water pressure [bar]	25	25
Dimension of apparatus l x w x h [mm]	915 x 260 x 410	900 x 345 x 350
Dimension of apparatus with case l x w x h [mm]	990 x 400 x 440	990 x 400 x 440
Dimension of tools and accessories case l x w x h [mm]	600 x 400 x 250	600 x 400 x 250
Weight of machine [kg]	37	35
Total weight [kg]	152	67

Specifications are subject to change without notice



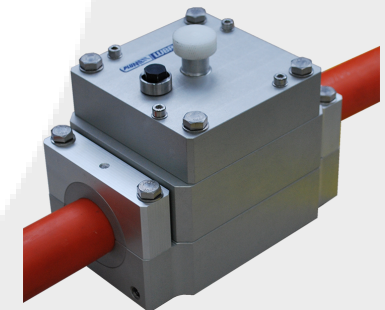
Hydrocab-080,
accessory for cable installation with water (floating), 80 l/min



Air after-cooler,
to increase Jetting performances when ambient temperature is over 20°C



Jetting Lube,
lubricant improving Jetting performance



Lubricator L18,
for the continuous lubrication of cables for a better Jetting performance